

ANNUAL REPORT

2022



Asheville Area
Habitat
for Humanity®

Serving Buncombe & Madison Counties



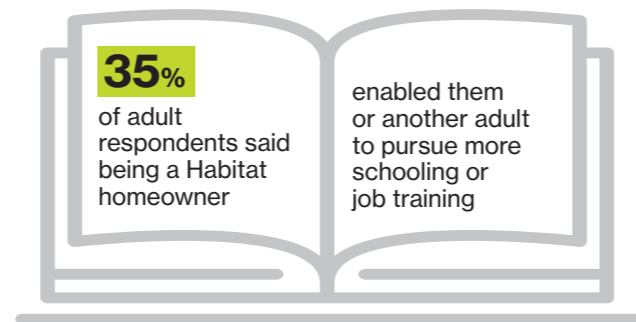
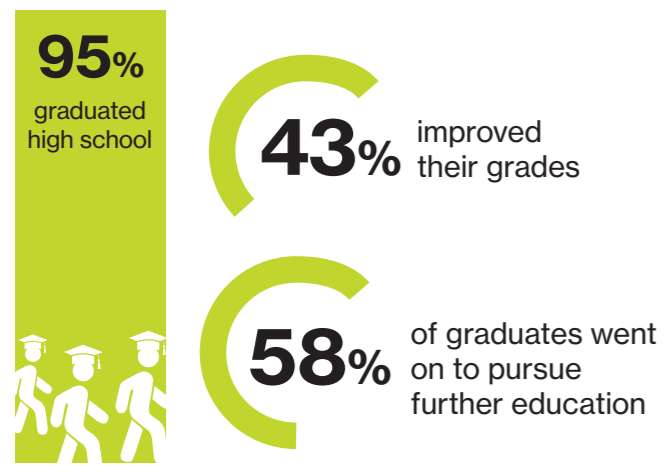
BUILDING TOGETHER FOR 40 YEARS

HOMES, COMMUNITIES & HOPE

For our 40th anniversary, we conducted a survey of all current Asheville Habitat homeowners to measure the impacts of homeownership. 45% responded. Here are some highlights of the findings.

Education

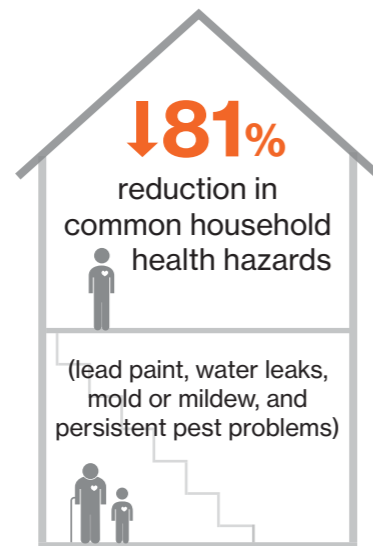
Children of Habitat homeowners



“I was able to cut down on hours at work to be able to go to school full time where I was able to receive my LPN, and now RN license.”

Health

Of those who reported respiratory episodes happening daily or weekly, **100%** said that the number of episodes decreased



↑57% improved their ability to afford medication

“Since being a homeowner, my family has kept group health insurance. We can afford the premiums and to buy glasses, braces, dental, mental health appointments and regular doctor appointments as needed.”

“My child has not had an asthma attack since we moved into our Habitat home.”

MESSAGE from Andy

We've been building together for forty years. Tens of thousands of people have put love in action as donors and volunteers. Habitat has invested millions to improve housing and build vibrant and diverse neighborhoods. With your help, nearly 900 local families have built better futures on the strong foundation of an affordable home.

This year we looked back to try and measure the impact of homeownership. Surveying homeowners, we found significant improvement in financial health, education achievement, health outcomes, and participation in their community. Affordable housing is so much more than a roof overhead. It is the foundation for everything we hope for our families and our neighbors.

For AAHH, 2022 was a year to celebrate! Our home repair program served their 500th homeowner. We broke ground on the next Habitat

home in Madison County. We celebrated the return of many beloved AAHH traditions like Collegiate Challenge, dedications and wall raisings, the Silent Auction, and, of course, the Warren Haynes Christmas Jam. Roughly a year ago, we celebrated a \$5 million grant from philanthropist MacKenzie Scott. This was an incredible endorsement of what we can build together.

We're investing this gift along with thousands of your contributions to meet a growing need for our work. We are in the middle of a decade-long challenge to serve another 1,000 local families. Achieving this, Asheville Habitat will have addressed 10% of our local affordable ownership and repair needs.

For 40 years, Asheville Area Habitat for Humanity has shown what we can build together. With your help, we'll keep building until everyone has a place to call home.

BUILDING AFFORDABLE HOUSING

NEW HOME CONSTRUCTION

“IT’S NOT A
HOMOGENOUS
KIND OF
NEIGHBORHOOD,
AND THAT’S ONE
OF THE THINGS I
LIKE MOST
ABOUT IT.”

Expanding products

Our largest neighborhood to date, New Heights, is set apart not only by its scale, but by the largest variety of housing types. The tried and true single-family home has been joined by 2-story townhomes, single-level townhomes built specifically for folks age 55+ to age in place, and walk-out townhomes that work with the mountainous landscape.

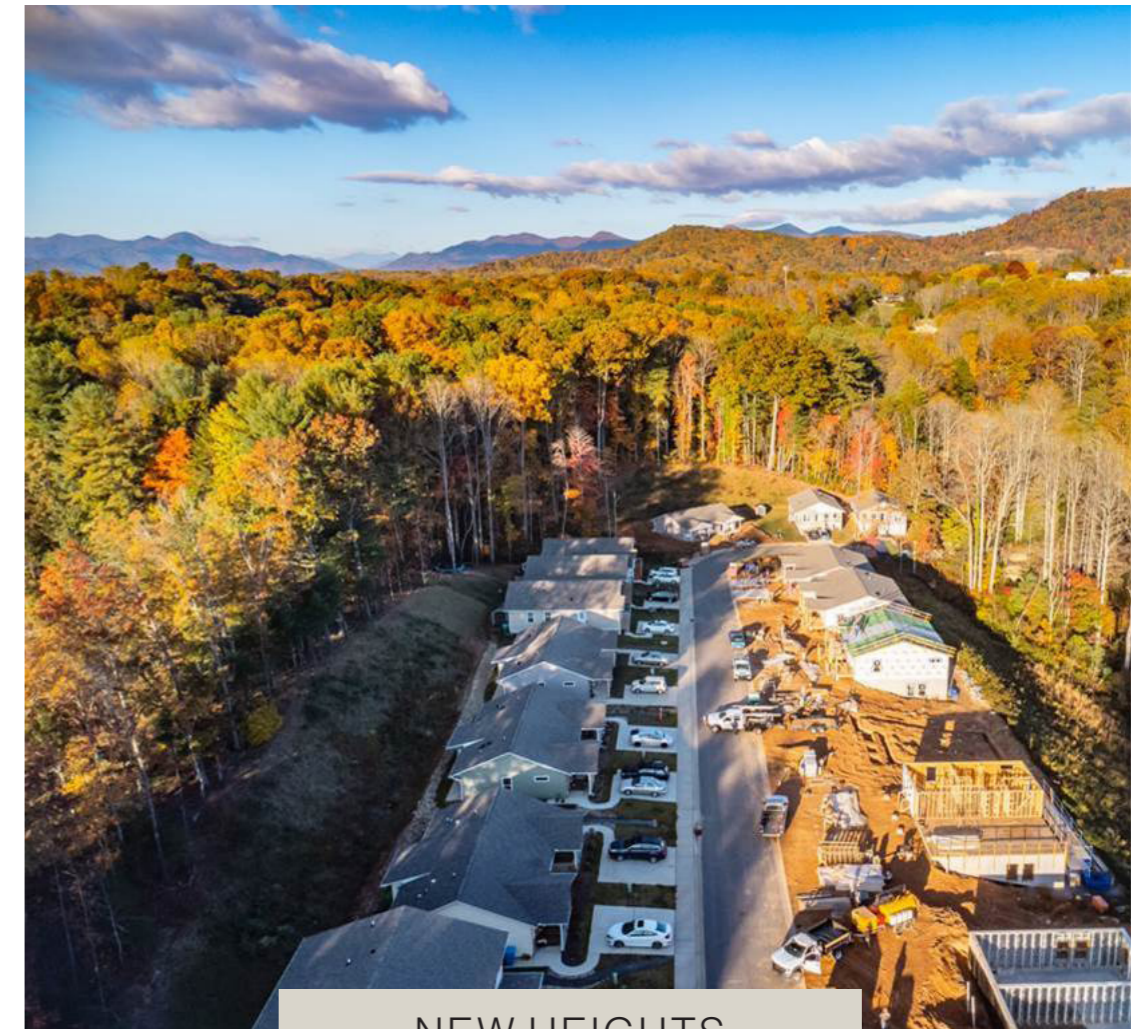
Neighbors in New Heights share a strong sense of community, gathering for potlucks, sharing books in the Little Free Library, babysitting services, and rides.

Kay Ponder, owner of an Aging in Place home, shared, “There’s a community here...we all had to do a lot of work to get here. It’s not a homogenous kind of neighborhood, and that’s one of the things I like most about it. Everyone is welcome here. This is a place where everyone can feel at home and be comfortable.”

Expanding service area

Asheville Area Habitat for Humanity and Madison County Habitat for Humanity joined forces to strengthen Habitat for Humanity in our region. As a combined organization serving Buncombe and Madison Counties, more families will be served with life-changing Homeownership and Home Repair programs in the coming years. More families will thrive, rather than survive.

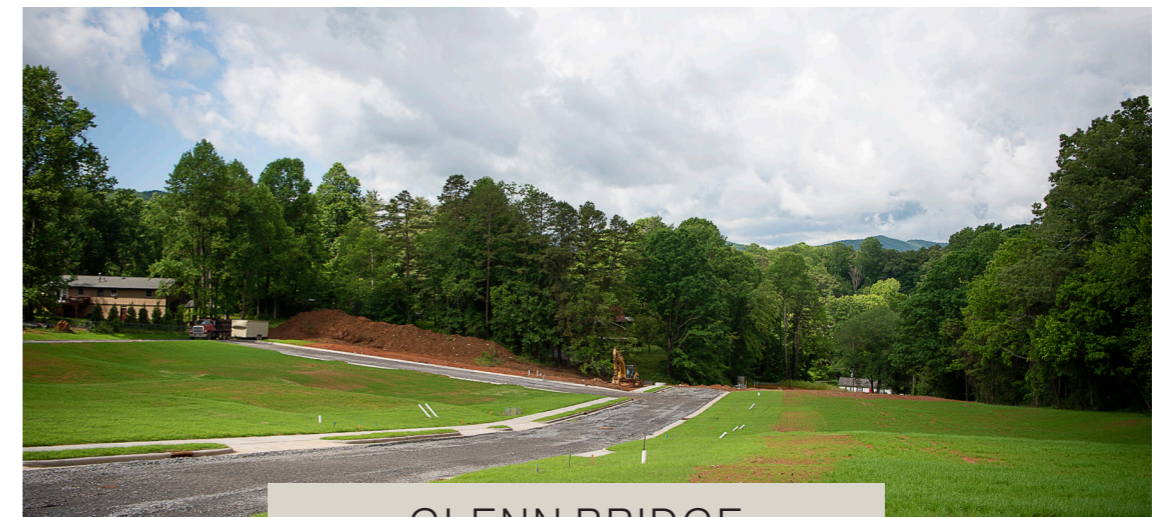
L to R: Kevin Click, AAHH Board member; Larry Peek, AAHH Board member and former MCHFH board member; Sidney Mashburn, AAHH Board member and former MCHFH Board member; and Andy Barnett, AAHH Executive Director on a lot in Mars Hill.



NEW HEIGHTS

This multi-generational neighborhood located just 6 miles from downtown Asheville features single family homes, two-story townhomes, single-level townhomes specifically designed for aging adults (55+), and 2-story walk-out townhomes. Accessible to people in all stages of life, 98 households of all ages and backgrounds will build strong, stable futures here.

Phase 1 - 38 homes - will be complete this Fall.



GLENN BRIDGE

As construction continued at New Heights, infrastructure work was installed at Glenn Bridge. Construction is set to begin in Spring 2023 and upon completion, 29 families will call this neighborhood off Brevard Road in Arden home.

PRESERVING AFFORDABLE HOUSING

HOME REPAIR & BUY-BACKS

Another way to preserve affordable housing is through buy-backs. People move for all kinds of reasons, and when it makes sense, Asheville Habitat exercises our right to repurchase existing Habitat homes. AAHH rehabilitates the homes to like-new condition and then sells them to other homebuyers who qualify for our program. This preserves affordable housing stock and provides another family, like Brian and his son (below), the opportunity to improve their housing.



The most affordable home is often the one you already own. But for many residents, especially older adults living on a fixed income, much needed repairs can be cost-prohibitive.

Jerry Best (pictured) lives in Oakley in the home he grew up in and inherited from his parents. He's a familiar face in his community, having served as the Oakley Fire Department Chief for many years and having long-been active with Oakley Baptist Church.

The roof on Jerry's family home had been tarped for many years because he was unable to afford a new roof and related repairs. It was a stop-gap measure that was unsuccessful at preventing water damage and did little to deter birds from grabbing insulation for their nests.

Asheville Habitat's Home Repair team rebuilt part of the roof framing before a new roof was installed. Jerry was right alongside the crew, helping to put insulation between the rafters and doing anything else he could to contribute. He is thrilled to be able to remain in the home and community that he knows and loves.

Roof repair and replacement is common work for our Home Repair team. But the work that took place at Jerry's home in November 2022 was unique because it represented a milestone; it was Asheville Habitat's 500th home repair job!



SUPPORTING HOUSING

VOLUNTEERISM



Volunteers are the hearts and hands of the organization. From age 16 to 80+, volunteers support every area of our work, and they have for 40 years.

After a few years of disruption, volunteerism rebounded in 2022 with more individuals, sponsor groups, and Collegiate Challenge teams back on the jobsites and in the ReStores.

As our programs continue to grow, so too does our need for volunteers. We'll be building in two counties soon - Buncombe and Madison, and our repair program is steadily scaling up. Our ReStores, including the Deconstruction business, are on a growth trajectory too.

For those that volunteer already, we thank you. Your contributions of time and talent build homes and communities whether you're swinging a hammer on the jobsite, ringing up customers in the ReStore, or answering the phone in the office.

Not yet a volunteer? We invite you to join us! Learn about all the opportunities at ashevillehabitat.org.



HOME REPAIR

Austin Brown

"Habitat is the highlight of my week. I come home with my body sore and my heart singing."



RESTORE

Jane Parmley

"My favorite parts of volunteering with Habitat are the people I get to work with and meeting new people; it's just fun to be here. It serves a lot of people, it's a good project and, well, I can do it."



ADMINISTRATION

Aaron Finkel (L) & Steve Casciato

"It's the responsibility of everybody to contribute to their community in some way, and I can't think of a better way than housing," Steve says.

ADVOCATING FOR HOUSING

SMART POLICIES, INCREASED ACCESS

Sometimes the seeds we sow take a while to root. A small but mighty Fair Housing Coalition has been working on ways to improve our local Fair Housing Ordinances for a few years now. Recently, their recommendation that Source of Income be added to the local Non-Discrimination Ordinances was echoed in a Land of Sky report that showed five key impediments to housing, one of which is discrimination.

To that end, we continue to encourage City Councilors and County Commissioners to protect renters from discrimination based on how they legally pay their rent - whether it be child support, disability checks, VA benefits, life insurance policies, or any rent assistance programs provided by the government or non-profit organizations.

Yielding a more prompt result was advocacy around Buncombe County's "Better With Bonds" campaign. We supported and advocated for the \$40 million affordable housing bond that will help ensure stable housing for children, homeownership for working families, and safe homes for seniors, as well as the \$30 million bond for open space. Both passed in the 2022 general election.

Use your voice to stand up for smart housing policies that enable more families to secure safe, stable affordable housing. Visit ashevillehabitat.org to learn more and sign up for Advocacy Alerts.

* The Bowen Report

IN THE WNC REGION, 34% OF HOUSING VOUCHERS (980) GO UNUSED*. THIS COULD CHANGE IF SOURCE OF INCOME WAS ADDED TO OUR LOCAL NON-DISCRIMINATION ORDINANCES.

Source of income discrimination is when someone is **denied access** to leasing rental property based upon **what legal income they use to pay rent.**

Examples include housing voucher, veteran subsidy, child support, etc.



FUNDING HOUSING

DONORS & SPONSORS

Affordable housing is needed more than ever. Housing costs far outweigh local salaries and nearly half of all households in Buncombe County (48.5 percent) are “cost-burdened,” paying more than 30 percent of income toward housing. As the need for affordable housing grew, so too did the cost of building it.

We continue to get creative with our fundraising methods and introduced “Blueprint Breakfast for Dinner” last fall. Some of Asheville’s culinary wizards whipped up incredibly delicious breakfast dishes for dinner at a food festival-style event at Rabbit Rabbit. It was a hit!

And long-standing events including Rock the House for Women Build and Warren Haynes Presents: The Christmas Jam came back strong in 2022.

An unexpected \$5M gift from American author and philanthropist, MacKenzie Scott, is helping us ramp up the Home Repair Program, accelerate the New Home Construction Program in Buncombe County, expand services to Madison County, and secure land to build future Habitat neighborhoods.

As we celebrate our 40th anniversary, we want to thank our loyal and steadfast supporters, as well as invite new partners to our work. **Our community needs us, and we need you.** All of you. Thank you!

New, renewed, and unexpected funding in 2022



Guests enjoy delicious bites at Blueprint Breakfast for Dinner, October 2022.

Support for Ukraine

With ReStore Register Round Up donations, a match from Asheville Habitat, and the generosity of community donors who collectively gave more than \$8,300, we sent Habitat for Humanity International a \$12,795 check for Ukraine Emergency Response. Habitat was on the ground in neighboring countries providing emergency travel kits, transportation and hotel vouchers, and helping displaced families with short and mid-term housing solutions.

Aid to Florida

Following the devastating effects of Hurricane Ian when it made landfall in southwest Florida as a Category 4 storm, customers again rounded up at the ReStore registers. Funds raised were directed to Habitat affiliates in Florida mobilizing recovery and rebuilding efforts.

GLOBAL HOUSING

BEYOND NC



Susan Yow, Director of Affiliate Tithe and Global Engagement at Habitat International, presents Asheville Habitat Board member Kevin Click with an award for reaching \$1 million in tithe at Camp Habitat in October 2022.

Tithe milestone

Tithing is a tenet of Habitat for Humanity with affiliates around the world supporting each other’s work. Asheville Area Habitat for Humanity hit a tithe milestone recently – \$1M in lifetime tithe – a mark that only six of 62 North Carolina Habitat affiliates have reached. Asheville is the 65th affiliate in the United States, out of 1,085, to reach this milestone.

Our monthly Tithe Program currently supports Habitat in Ethiopia, Guatemala, and Haiti and Habitat for Humanity’s Orphans & Vulnerable Groups Fund, aiding some of the world’s most marginalized people. We will tithe to additional countries in the next few years thanks to the large gift from MacKenzie Scott.

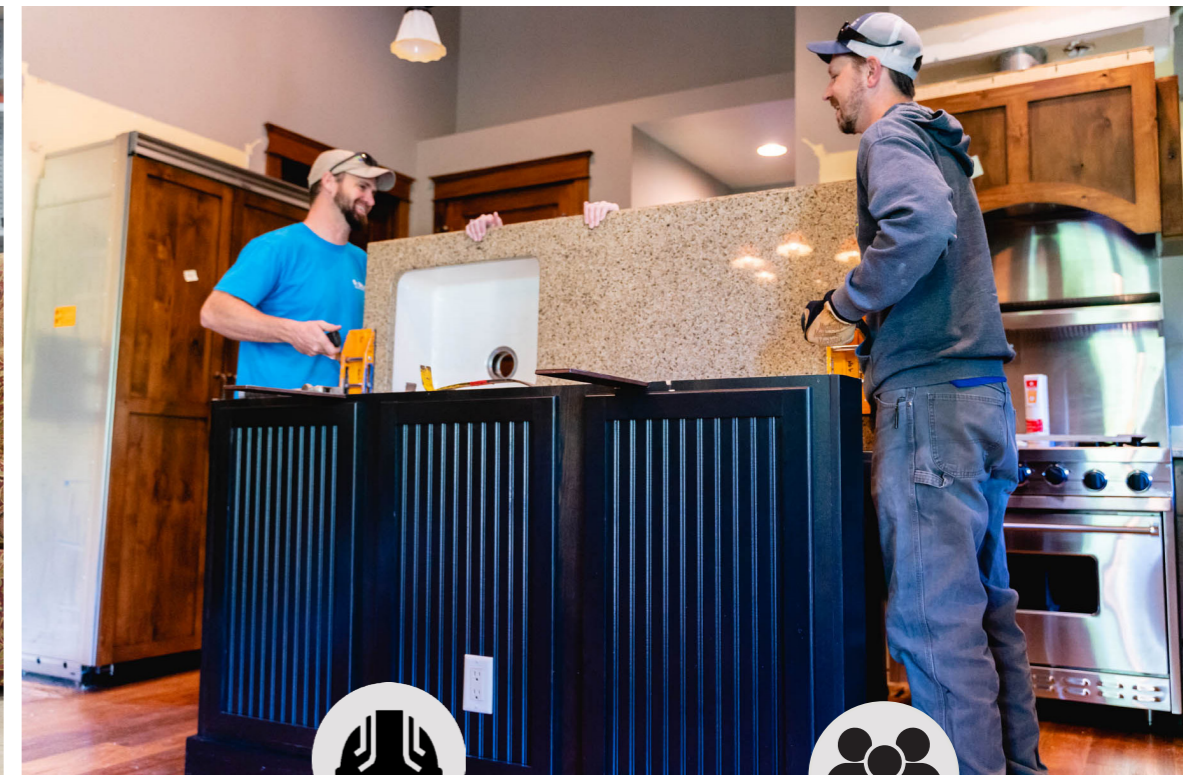
FUNDING HOUSING

RESTORE

Our two ReStores – in Asheville and Weaverville – sell mostly donated home goods and building supplies at affordable prices to the general public, diverting thousands of tons of material from the landfill each year. Proceeds from sales help fund Asheville Habitat’s building programs and help cover administrative and fundraising expenses.

The needs in our community are great. Together, we can ensure more families have access to stable and affordable housing and also support work that intersects with housing such as healthcare and education. To that end, since its inception in 2019, the ReStore Register Round Up program has raised nearly \$80,000 for local non-profits and Habitat for Humanity disaster relief and recovery work. A big thanks to shoppers who choose to round up their purchase to the nearest dollar to support Habitat and our many partners.

When you support the ReStore, you support affordable housing. Learn more at ashevillehabitat.org/restore.



shop

From building supplies and appliances to furniture, housewares, and art, the ReStores are where you'll find exactly what you want or didn't know you need. There's a Silent Auction in the Asheville ReStore and now an online store for select items with local pick-up only.

donate

Clean out **your** home to help others build and repair theirs. Donate your unwanted items to the Asheville Habitat ReStores where they'll be sold to the general public, and proceeds will support our affordable home building and repair programs.

volunteer

Join a winning team! The Asheville ReStore ranks as one of the top ReStores in the nation– an achievement that would be impossible without our dedicated team of volunteers. Volunteers support all areas of the ReStores including receiving, loading, merchandising and ringing up sales.

hire our decon team

Give your kitchen cabinets and appliances a new lease on life. If you're remodeling, contact us. Our Deconstruction team gently extracts reusable building materials and sells the salvaged building materials at the ReStore. Proceeds help build and repair more homes in our community.

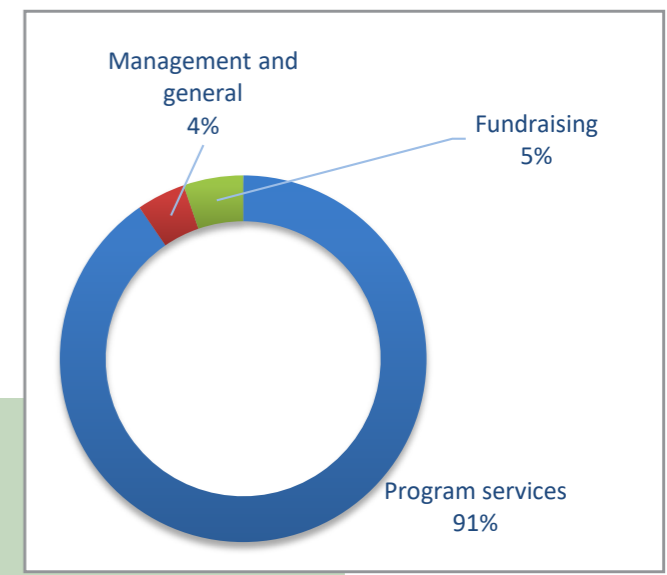
become a business partner

If your business is cleaning out its warehouse, remodeling its offices, or simply has excess inventory, we hope you will consider joining this core group of ReStore supporters by donating unwanted merchandise.



FINANCING HOUSING

REVENUE & EXPENSES



Habitat for Humanity's unique funding model includes two self-sustaining revenue streams: ReStore proceeds and mortgage income. They are valuable but only a piece of the income pie. We rely heavily on government grants and gifts from individuals, businesses, and faith communities, as well as in-kind donations from business partners and vendors.

Building and repairing homes is capital intensive, especially when you're doing it as a non-profit. Habitat can't pass on increased material or land costs to our clients. Your financial partnership is more important than ever. With a 40 year track record of being good stewards of your gifts, we hope we can count on your continued support. Thank you!

Audited Statement of Financial Position June 30, 2022

| | | |
|---|------------|---------------------|
| Assets | | |
| Cash and equivalents | 927,434 | |
| Restricted cash | 255,314 | |
| Prepaid Expenses & Grants Receivable | 73,743 | |
| Promises to give, net | 32,776 | |
| Investments | 701,065 | |
| Inventory | 3,943,973 | |
| Construction in progress | 1,187,390 | |
| Mortgages receivable | 9,671,776 | |
| Property and equipment, net of depreciation | 8,411,103 | |
| Other assets | 128,607 | |
| Total assets | | \$25,333,181 |
| Liabilities and Net Assets | | |
| Accounts payable and accrued expenses | 546,424 | |
| Payroll liabilities | 159,522 | |
| Homeowners' escrow payable | 250,365 | |
| Refundable deposits | 12,676 | |
| Notes payable | 9,479,514 | |
| Total liabilities | | \$10,448,501 |
| Net assets: | | |
| Without donor restrictions | 19,260,803 | |
| With donor Restrictions | 3,971,877 | |
| Total net assets | | \$23,232,680 |
| Total liabilities and net assets | | \$33,681,181 |

Audited Statement of Activities for the Year Ended June 30, 2022

| | |
|---|---------------------|
| Support and Revenue | |
| Contributions | 10,698,204 |
| Sale of homes | 2,212,836 |
| Home Repair sales | 42,000 |
| Government Grants | 776,858 |
| ReStore Sales | 3,683,856 |
| Amortization of mortgage discounts | 691,995 |
| Rents, Net of Related Expenses | 205 |
| Other income | 564,309 |
| Total public support, revenues and gains | \$18,670,263 |
| Total Net Assets Released from Restrictions | 685,646 |
| Total Unrestricted Public Support, Revenues, Gains and Other Support | \$19,355,909 |
| Expenditures: | |
| Program services | 8,968,908 |
| Management and general | 425,711 |
| Fundraising | 523,294 |
| Total expenditures | \$9,917,913 |
| Increase in Net Assets Without Donor Restrictions | 7,219,178 |
| Increase in Net Assets With Donor Restrictions | 890,543 |
| Increase in net assets | \$8,109,721 |

Financial information about this organization and a copy of its license are available from the State Solicitation Branch at 919-814-5400. The license is not an endorsement by the State.

Audited financial statements available upon request.



OUR VOLUNTEERS

PUTTING LOVE INTO ACTION

Thank you! We are grateful for *everyone* who volunteers with us, whether it be once or once a week. We believe that everyone deserves a decent place to live and everyone can do something to help make that possible. There are various volunteer opportunities to suit many different interests and skills. Join us!

We are especially humbled by the dedication of our *core* volunteers. These folks are an extension of our staff, dedicating their time weekly or bi-monthly to build and repair homes and support the ReStores, Deconstruction, and administrative programs. They are listed below.

Core Volunteers - New Home Construction & Home Repair

- | | | |
|----------------|------------------|-----------------|
| Karen Ahner | Ted Faber | David Langdon |
| Ross Akin | Lou Farquhar | John Latham |
| Dick Allen | Kathy Fefer | Joe Linville |
| Joe Bange | Brad Feuston | April Liou |
| Melissa Banks | Ian Fischer | Jim Losse |
| Fred Barbour | Barbara Galloway | Ron Lowell |
| Jim Barham | Fred Glesser | Ron Macklem |
| Tom Berner | David Gramley | George Maston |
| Phil Bowers | Beth Greck | Bill McDowall |
| Fay Brown | Cecil Greck | Carey McKain |
| Cetta Brown | Park Greer | Georgena Millar |
| Austin Brown | Jan Griffen | Barbara Morgan |
| Claudia Cady | Bryan Gutman | Paul Muller |
| Kevin Click | Doug Harris | Ron Navik |
| Jan Cosman | Terri Harris | C. J. Obara |
| Phil Croll | John Johns | Brad Olson |
| Walt Curl | Ralph Johnson | Lyle Petersen |
| Dave Decarme | Don Jones | John Petkovich |
| Josh Diamond | Berni Koesters | Joyce Ramsey |
| Paul Dismukes | Richard | Jerry Ray |
| Jim Drennan | Kownacki | Bill Reid |
| Peter Eisemann | Tim Kurtz | Evan Rosenberg |

- Ken Roth
- Marc Rudow
- Kevin Ruesch
- Bill Ryan
- Dan Sanford
- Bruce Santorini
- Pete Steurer
- Buddy Tallant
- Henry Ulrichs
- Jeff Vanderlip
- Garland Walker
- Sharon Waugh
- Loretta
- Wawrzyniak
- Shannon Weiss
- Julie White
- Bill Winkler
- Jim Worley

Core Volunteers - Administration

- Audit Committee**
 Peggy Lewis
 Sydney Mashburn
 Mona Wade

- Building Committee**
 Melissa Banks
 Jared Deridder
 Kerney McNeil
 Amy Musser
 Robin Raines
 Brad Rice

- Finance Committee**
 Ken Kaplan
 Fielding Lowe
 Robby Russell
 Lee Shampang
 Joe Ward

- Fund Development Committee**
 Peggy Crowe
 Michael Dempsey
 Wes Wright

- Governance Committee**
 Mychal Bacoate
 Kevin Click
 David English
 Spencer Hardaway
 Brad Olson
 Elizabeth Sims

- Homeowner Loan Committee**
 Mychal Bacoate
 Chris Berthiame
 Jason Chambers
 Brattan Gelder
 Leslie Hennessee
 Rita Lee
 Jessica Phalen
 Merion Presha
 Lee Shampang

- Human Resources Committee**
 Lisa England
 Lou Farquhar
 Ian Fischer
 Kate Folan
 April Liou
 Stephen Miller

- ReStore Committee**
 Chris Cavanaugh
 Michael Dickmann
 Rhonda McKenna
 Brad Olson
 Karl Payton



- Office Support**
 Steven Casciato
 Amy Cooper
 Barbara Cooper
 Aaron Finkel
 Rhoda Groce
 Tiffany Schultz
 Lee Shampang

- Special Projects**
 Brattan Gelder
 Skip Helms

- Strategic Planning Committee**
 Mychal Bacoate
 Melissa Banks
 Russell Bowles
 Kevin Click
 Spencer Hardaway
 Steve Miller
 Karl Payton
 Elizabeth Sims
 Wes Wright

Core Volunteers - ReStore

Teresa Allen
Bruce Ammerman
William Apton
Stephen Bakes
Melissa Banks
Bryan Bennett
Cecil Bennett
James Bingham
Jason Blount
Julian Brinson
Jenny Bromley
Diane Bryson
Kevin Campbell
Roseanne Cataldo
Gene Charleton
Jacob Cohen
Bernhard Cordts
Stuart Cotterill
Ann Cox
Chris Cutting
Jamie Dale
Arthur DeBenigno
Laverna DeBenigno
Michael Dickmann
Susan Diehn
Cassie Dillon
Sandra Dykes
Bruce Emory
Nancy Estabrooks
Carolyn Fialkow
Sid Finkel
Charlie Franck
Peter Fraser
Gilda Gatti

Roger Gauthier
Jesse Gingrich
Denise Goodson
Lowell Grabel
John Graeter
Mike Green
Sherry Griffith
Edward Grove
Ned Guttman
Lisa Harvey
John Harvin
Shirley Havera
Velvet Hawthorne
Nancy Herman
Jim Hester
Beth Hill
Dick Hipp
Resa Holt
Fran Hutchens
Bill Isrin
Debbie Ivester
Cathy Jefferis
Bob Jordan
Anne Justice
Lynn Kirby
Sharon Kirkpatrick
Tim Kruse
Gail Lamb
Allen Laws
Rebecca Lawton
Richard Levy
Laura Lowe
Edward Madlon
James Manhart

Nanette Manhart
Dick Manz
Robert Mathson
Susan Maveety
Linda McGowen
William McGowen
Rhonda McKenna
Janice Mead
Jennifer Meyer
Christine Morgan
Fred Morgan
Lynne Neaves
James Northey
Meredith Norwood
Marlies Owens
Mark Palmer
Jane Parmley
Wendy Parton
Eric Petersen
Jeannie Phillips
Lawrence Pierce
Stephanie Plemmons
Richard Pollard
John Pragle
Edward Prestemon
Tina Quinn
Sheila Ray
Lee Raymond
Betty Jo Reading
Carla Reif
Warren Reif
Jon Richardson
Judy Ridge
Kristen Roach

Beth Robrecht
Janis Rose
Evan Rosenberg
Kris Ruth
Wayne Ruth
Dennis Schaubert
Ron Schmid
Haydee Schulte
Ann Schwarz
Tom Sheehy
Todd Siegel
J.W. Simpson
Martha Smith
Yvonne Smith
Richard Spoering

Charlie St. Clair
Margie Stansell
Cindy Stanton
Anne Tansey
Sandra Thompson Jaeger
Raymond Tippet
Connie Tobolsky
Walt Tolley
Marty Toren
Jerry Towson
Lou Towson
Linda Urquhart
Jane Vasica
Anne Vilen
Laurie Vint

Barbara Wagner
Eleanor Walther
Daniel Ward
Sheri Waters
Charlotte Watson
Thomas Weaver
Melinda White
Arnold Willen
Marcia Windham
Jan Wright
Joseph Young



OUR DONORS

EVERY GIFT MATTERS

Thank you! Asheville Habitat's work includes more than building new houses. It's also developing land, repairing existing homes, advocating, originating loans, providing homebuyer education, managing volunteers, and operating two retail stores and a deconstruction service. Donors and sponsors at every level provide the much needed funding for us to be able to continue doing all of this important work. In 2022, 1,278 donors made a gift to Asheville Habitat, 25% for the very first time. Thank you for believing that together we can help families and communities thrive, and for putting your belief into action by financially supporting our work.



Barbara and Burton Aaronoff
 Dena Abercrombie
 Michael Adams
 Marla and Joel Adams
 Ad-Lib Clothing
 Advanced Business Equipment
 Douglas Affinito
 David and Deborah Aiton
 Timothy Alberts
 Maddy Alewine
 Ovenia Alexander
 Rod and Karen Allan
 Cynthia Alleman
 Dick and Judy Allen
 Altamus, LLC
 AmazonSmile Foundation
 America's Home Place
 Rebecca Anderson
 Lanie Anderson
 Jean and Pete Anderson
 Mary and John Anderson
 William Anderson
 Stephen Anderson
 Anonymous Donors
 Bernie and Holly Arghiere
 Douglas and Barb Arnold
 Michael Arones
 Asbury Memorial United Methodist Church
 Asheville Christian Academy
 Asheville Culinary Festival, Inc
 Asheville Fence
 Jannice Ashley
 Sydney and David Atkinson
 Atlantic Bay Mortgage Group
 Jessica Auer
 Margaret Averyt
 Rebecca Ayres
 Suzanne Bachmann
 Gary Bagnato
 Karen Bain
 Nancy Baker
 Thomas Baldwin
 Bill Bale
 Tom Balsanek
 Joseph and Donna
 Scott Bangert and Erika Heumann
 Bank of America Charitable Foundation
 Bankers Insurance LLC
 Melissa Banks

Fred Barbour
 William Bares
 Jim and Julia Barham
 Brotherhug Barlow
 Barn Light
 David and Lauri Barnes
 Andy Barnett and Jennifer Folkers
 The Estate of Nada Barnett
 Luther and Ruth Barnhardt
 Winnie Barrett
 Janet Bartczak
 Basilica of St. Lawrence
 Sylvia Bassett
 Brigitte Bassham
 Lenore and Joe Baum
 Donna Baumbach
 Be Realty Home Brokerage
 The Beattie Foundation
 Rita Belanger
 Kelly Belcher
 Julie Bell
 Jon Bellows
 Lucy Bennett
 Greg Berg and Barbara Mozena
 Randy Bernard
 Scott Bianchi
 Biltmore Lake Homeowners Assoc.

Thomas Birmingham
 Nancy Hyton
 Sheree and Jim Bissett
 Black Mountain Presbyterian Church
 Black Mountain Swannanoa Valley Endowment Fund of The CFWNC
 Brady and Bobbie Blackburn
 Stephen Blair
 Pamela Blessman
 Barbara Blomberg
 The Blood Connection
 Kevin Blue
 Linda Blue
 Blue Cross NC
 Blue Earth
 Blue Ghost Brewing Co.
 Blue Ridge Appraisal, LLC
 Blue Ridge Home Inspections
 Blue Ridge Orthodontics
 Judy and Mike Bohan
 Books for Good
 Perry Boone
 Gordon and Mickie Booth
 Debra Bowen and Michael Ziecheck

William Bowie
 John Bowker
 Jeffrey and Kathy Boyea
 Travis and Jennifer Boyer
 Jeff and Leigh Ann Bridgman
 Ann and Clive Broadbent
 Leah Broker
 Amy and Woody Brooks
 Robyn Brooks
 Mary Brosch and Fred Glesser
 Donna and Philip Brown
 Daniel and Linda Brown
 Muffi Brown
 Concetta Brown
 Jennifer Brown
 Allan and Jean Brown
 Fayette Brown
 Joe and Janice Brumit
 Diane Bryson
 Mary Buckwalter
 Bud and Karel Buice
 Builders FirstSource
 William and Sue Bumby
 Glenda and Bob Burgin
 Carrie Burgin and Kevin Miller
 Barbara Burke
 Judy Burnstein
 Heather Burrowes
 Martha Burrows
 Terry and Beverly Burt
 Rick Burton and Jesse Cervantes
 Leonard Burton
 James and Ann Burton
 Kenny Busch
 Nancy Buschmann
 Greta Bush and Keith Silcox
 Linda and Tom Bushar
 Rebeccah Bussert
 Judith and Jeff Byers
 James Byous and Beth Barrie
 Sandra Byrd
 Angela Caffaro
 Maria and Larry Cain
 Margot Cain
 Wayne and Mary Caldwell
 Calvary Episcopal Church
 Pamela Camp
 Angie and Brett Cannady
 Tom and Katharine Cannon
 Susan Cannon
 Edda Cantor and Marjorie Brown

Walter and Betsy Cantrell
 Linda and Fred Cardina
 Careco of Asheville
 Carolina Day School
 Bill and Terri Carpenter
 Rebecca Carr
 Robert Carr and Carolyn Davis
 Thomas Carruthers and Cara Tate
 Aiden and Harlan Carson
 Don and Cynthia Carson
 Susan Carson and Robert Smith
 Tom Carter
 Phil and Laura Casey
 James Cassara
 Jay and Linda Casselberry
 Louise Gate and Tom Wernicke
 Chris and Pam Cavanaugh
 Central United Methodist Church
 Marcia and John Chabot
 Champion Credit Union
 Adrienne Chang
 Rick and Tempe Chapman
 Charmed Asheville
 Erin Chester
 Beth and Dave Chestnut
 Christ School
 Christine Cicotello
 Circle of Mercy
 City of Asheville
 Patricia Clark
 Betsy and Douglas Clarke
 Ann and Samuel Clarke
 Vera Clay
 Clean Environments
 Charlotte Cleghorn
 Kevin Click and April Liou
 Evelyn Clifford
 Charlie and Pat Clogston
 Beth Coakley
 Jill Cochrane
 Pat Collett
 Tim Collins and Tom Wolff
 The Community Foundation of WNC
 Comprehensive Chiropractic
 Vanessa and Josh Comstock
 April Conover
 Elizabeth and Bob Cook

Juliana Cooper-Goldenberg and Larry Goldenberg
 Sandra Cordell
 Jan Cosman
 County of Buncombe
 Cary Courier
 Brent and Carol Ann Coyle
 Nancy and Paul Craig
 Carol and Carlton Craig
 Van and Evalyn Crawford
 Denny and Kay Crews
 Peggy Crowe
 Margaret P Crum
 Carol Culler
 Pamela Culp and Pam McGill
 Joe and Sandra Cummings
 Jeanne and Charles Cummings
 Gilbert and Virginia Curl
 Walton and Karen Curl
 Susan and Jeff Curtis
 Alan Cutter
 Chris and Paul Cutting
 Tom Daily
 Jamie and Anne Dale
 Robert and Peggy Dalman
 Stanley Dalton
 Anne-Marie Dany
 Kathryn Daughton
 Alan and Nance Davidson
 Bob and Dottie Davis
 Madeline Davis
 Susan Davis
 Sherri Davis
 Kassi Day
 Laverna and Arthur DeBenigno
 Judith DeCarme
 Deerfield Charitable Foundation
 Deerfield Episcopal Retirement Community
 Jim and Cindy DeGrave
 Mary DeGroot
 Jeff and Janet Dektor

Michael Dempsey
 Cissy Dendy
 Sue and Mick Denham
 Anna Depta
 Gene and Virginia Derryberry
 Douglas Desrosiers
 Stella Detarsio-Park
 Robert Devereaux
 George Dewey
 Joshua and Wendi Diamond
 William and Penelope Dickason
 Catherine Dickinson
 Myra Dickson
 Leslie and Jurgen Dierks
 Cassie Dillon
 Paul and Chris Dismukes
 Robert Disney
 Sophie Dixon
 DJ's Pickles
 Estate of Timothy Dobbings
 Marcy and Barry Dobil
 Dogwood Health Trust
 Michele and Lothar Dohse
 Frank and Maria Dolbow
 Alice and Mike Donnelly
 Crystal Dover
 Joseph Dowing
 Laurie Downs
 Lorraine Doyle
 Stephanie and Logan D'Souza
 Spencer and Carol Duin
 Duke Energy
 Robin Dunn and Dawn Wallace
 Lyn Dunn
 Susan and John Dupree
 Roger and Anne Durham
 Robert and Cynthia Durham
 Dr. Louis Dwarshuis and Dr. Marilyn Kolton-Dwarshuis



Sandra and Steve Dykes
Katherine Early and
Peter Solet
East Fork Pottery
Eaton Charitable Fund
Richard and Bridget Eckerd
Stephen Edge
Jesse Edgerton
Warren Edwards
Sara Egan
Jessica Eicholz
Carey Jo and Jim Elam
Ben Eland and
Leah Green
Sumaya El-Attar
Holly and Doug Elledge
Tommy and Sarah Eller
Anne Eller
John Ellis
Millicent and Miles Elmore
Cleone Elrod
Bruce and Day Ann Emory
Michelle and Eric Ender
Engel & Volkers Asheville
David and Tammy English
Liesl and Peter Erb
Bruce and Denise Ertell
Stefanie Erway
Nancy Erwin
Alan and Suzanne Escovitz
Nancy Estabrooks
Brian and Allyson Etheridge
Michele Evans
Ted and Donna Faber
Matthew Fagan
Jane Fant and
David Slobodin
Sara Farmer
Yvonne Farnell and
Bob Smedley
Lou and John Farquhar

Robert Feldmann and
Sarah Skinner
Fellowship Fund
Erik Field
Beth Fields
Marshall and Heidi Fields
Theodore and Judy Figura
Larry and Marian Fincher
Mary Finegan
Paul and Virginia Finegan
Stephen and Jackie
Finstad
First Baptist Church -
Weaverville
First Baptist Church of
Asheville
First Christian Church
First Citizens Bank
First Presbyterian
Church of Asheville
Ian and Debbie Fischer
Hedy Fischer
Susan Fisher
Edward Fleming
Hayes Fletcher
Zachary Fligel and
Traci Meyer
Ann-Morrison and
Chip Folkers
Chuck and Nancy Foltz
Martin Ford
Margaret Fouse
Veronica Francia
Tricia and Charlie Franck
Paul Franklin
Franklin School of
Innovation
Clary Franko
Rebecca and Watson
Frawley
Miriam Freeman and
Larry Hamilton

Michael and Carol Ann
Freeman
Patricia Friedrichs
Rei and Bradley Fuller
Martha Fullington
Judy Futch and
Paul Smith
Jimmy Galloway
Marie Gantz
H. Wesley and Cornelia
Garbee
Sheila Garcia-Garmon
Grant Garmon
Leah Garth
Kent Gatling
GE Aviation
Barbara and Dan Gerber
Bill Gettys
Todd Ghassabian
Sandra Gill Clark
Scott and Mary Gillam
Monroe Gilmour and
Fern Martin
Linda Giltz
Ginger's Revenge
Jesse Gingrich
Lynn Glaser
Patricia and Charlie
Glazener
Patti Glazer
Jane Godard Caris
Ron Godbold
James Godfrey
Gold & Gold, P.A.
Jennifer Goldenberg
and Sebastian Doty
Cathi Goldie
Frank Goldsmith
David Goldsmith
Meridy and Steven
Goldstein
Ellen Goodell

Mickey and Kay
Goodman
Elizabeth and Ric
Goodman
Carol Goodson
Barbara Gordesky
Laura Gordon
John Gosnell
Jeff and Barbara Gould
Gower Corporation
Lowell and Susan Gabel
David and Rhonda Gramley
Megan Grant and
Fletcher Hodnett
Molly Graver
Neal Graves
Cecil and Beth Greck
Gary and Mary Green
William Greene
Bruce and Rebecca
Greene
David and Carla Greenfield
Carol and David
Greenspan
Steven Gregory
David Greiner and
James Gray
Christine Greir
Jan Griffen
Barbara and Lamar Griffin
William and Alice Griffin
Timothy and Susan Griffin
Clair Griffith
Adam Griffith and
Susan McDowell
Julie Griffith and
Timothy Seneker
Mike Grillot
Pat and Junius Grimes
Margaret Griner
Larry and Barbara Griswold
Jim and Sheryl Groce
Trey Groce
Bill and Rhoda Groce
Randy and Jill Grodi
Sharyn Groh
Grove Stone & Sand
(Hedrick Industries)
Bernadette Guzzy-
Blaurock
Andrew Gwynn
Habitat for Humanity
International
Maggie Hagen
Elizabeth Haggerty
Joseph Hale
Morgan Hale
Ann Hall
Cecilia and Bret Halverson

Mackenzie Hampson
Mike and Karen Hamsho
Lois Hancock
Ron Hancock
Kathleen and Barry Hanna
David and April Harper
Clark Harris
Kimberly and Michael
Harris
Terri and Doug Harris
Mary Jo and Tom Harrison
Susan and Michael
Harrison
Kathleen and Bruce Harter
Judy and Jim Harvard
Terry and John Hash
Sharron and Bruce Hatfield
Tom Hayes
The Haywood Street
Congregation
Robert Headley
Elizabeth and John
Heafield
Frances and Richard
Healy
Dwight and Jill Healy
Patricia and Tom Hearron
Rick and Barbara Hebert
Catherine Hebson
Leslie Hennessee
Bruce and Cathy
Henschen
David and Carol Hensley
Nancy Hepler
Nancy Herbert and
Ed Stoll
Carolyn Herbst
Sarah and Sam Hess
Jo Nan Hester
Whitney Hewitt
Jerry and Linda Hicks
Susana Hilderbrand
Carolyn and Ben Hill
Woody and Beth Hill
Roney Hilliard
Hillman Beer
Susan Hills
Pam Hinson
Hoer Family Fund
Deborah and William
Holden
Kathy and Cliff Holden
Holeman & Finch
Edwin Hollifield
Bob and Linda Hollis
Kathleen Holmes
Stan and Sandra Holt
The Home Depot
Foundation
Hominy Baptist Church

Ruth Hopkins
Sudie Hopkins
Sandy Horowitz
Pat and John Horrocks
Horton Family Foundation
Pat and Barbara Howard
Sara and Bill Hoyt
Ann and Sam Hubbard
Elizabeth and John Hubbell
Heather and Fred Hudson
Patricia and Franke
Huffman
Human Services Grant
of The CFWNC
Jane and Jack Hunnicutt
Horace Hunt
Ellen and William Hunter
Cynthia Hunter
Elizabeth Huntley
Eileen and Chuck
Hutchison
IBM Employee
Charitable Contribution
Campaign
Jack and Sheila Ingersoll
Dorothy Irwin
Jane Isbey
Edward Isbey III
Phillip and Jennifer Jackson
Carolyn Jackson and
Gera Blaauw
Bill Jacobs and
Susan Posey
JAG Construction
Mary James
George and Colleen
Jamesson
Charles Jamison and
Carol Boone
Beth and Paul Jantsch
James Jarratt and
Ed Fleming
Jarrod and Summer Jarvis
Edward and Vicki Jenest
Janet John
Victoria and Ralph Johnson
Joel Johnson
Kirk Johnson and
Rena Brown
Debbie Johnson and
John Olson
Bob Johnson
Brion Johnson
Dwane and Veronica
Johnson
Randy and Mary Johnson
Johnson Price Sprinkle
Timothy Jones
Virginia Jones and
Sue Kaiser

Elizabeth Jones
and John Ellery
Joan Jones
Ellen Jones
Sherry Jones
Virginia Jones
Douglas and Carolyn
Jones

Glenna Kirkpatrick
Kinga Kiss-Johnson
Scott and Kathleen Kitt
Ariane and Kris Kjellquist
Elaine and David Kjellquist
Kimberly Klaas
Harry and Sydney Kloos
Jane Knight



Bette Jore
Clifford Joslin
Dan Joyner
Nathan and Megan Jump
Chris Kaczynski
Bill and Katie Kalarovich
Linda and Andrew Kane
Russ and Maureen Kantner
Bob Kaplan
Vinod and Stasha Kapoor
Shannon Kauffman
Mark Keappler
Patsy Kever and
Jim Aycock
Lucy Keil
Roxanne Kelly
Stu Kelly
Donna and Robert Kelly
John and Amy Kelso
Amy Keltner
Jacqueline Kennaugh
Rhonda Kensinger
Lynda Kepler
Henri Kieffer and
Ann Batchelder
Anne Kime
Karla and Bennett King
James King
Lynn and Terry Kirby

Know Network Risk
Caroline Knox
Susan and Bernie Koesters
Elizabeth Korb
Charlie Kosuth
Nancy Krecklow
Evan and Sarah Kress
Jeff Krider and Patti Moore
Caroline Kuebler and
Bob De Haas
Timothy Kurtz
Richard and Claudine Kurtz
Michael Kut yana
Susan Lake
Gary and Carolyn Lamson
David Lane
John and Susan Laney
Michael and Milissa Lang
Alan and Jonnie Lang
Marc Langweiler and
Candy Gallaher
Scott Larcher
Jeanne Latessa
Jack and Charlotte
Laughlin
Mary Ann Lawler and
Neal Sigmon
Lawrence S. Holt, Jr.
Fund

Barry and Nancy Lawson
Rebecca and Trevor
Lawton
David and Susan Leader
Dick and Susan LeDuc
Rachael and Anthony Lee
David Lee
Lee Barnett and Sons
Plumbing
Walt Leginki
Mark and Chris Lenderman
Jane Leone
Angela and Myron Lepro
George LeRoy

Kathryn Long and
Axel Graumann
Col. and Mrs. Mahlon H.
Long, III
Les and Catherine Love
Ronald Lowell
Sherry Lubic
Elizabeth Lusk
Pat Lutman
Patricia Lux
Myra Lynch
Cameron Scott
MacDonald
Ron and Sandra Macklem

Mast General Store, Inc.
Robert Mathson
Christopher Matthews
Lynn Maust
Jay and Susan K. Maveety
Catherine Maxwell
Suzy Mayer
Mike and Judy Mayer
Joseph Mayo
Mays Johnson Law Firm
Anna and Michael Mazur
Paul Mazzola
Beth McAlister
Nancy McCarthy
Jack and Diana McCarthy
Jo McCausland
Ray and Sue McClinton
Kevin McCormick
Ellen McCrimmon
Fern and Russel
McCrimmon
Carol McCrory and
Brenda Clark
Deane McDaris
Laurie McDonald
Michael McDonough
JoAnn McElrath
Linda and William
McGowen
Clinton and Sharlene
McGraw

Lois and Alan Mills
Joseph Minicozzi
Mission Health & Hospital
Joseph Mitchell
Carroll Mizelle, Jr.
Jared Moehring
Michael Mooney and
Marja Warehime
David Moore
Cassidy Moore
Barbara Morgan
Jim and Pat Morris
Mosaic Community
Lifestyle Realty
Moses Brown School
Johnny Moss
Sarra Mossoff and
Justin McCalla
Mountain City Cakes LLC
Mountain Xpress
Lucille Mueller
Paul Muller
Dick and Vinton Murray
Larry and Collen Murray
John Musser and
Kerry Patton
John and Susan Mycroft
Ns Naizer
Reena Napolitano
NC Housing Finance
Agency

Margaret Palmer
Mari Panzenhagen and
Kyle Boyd
Chris and Vasiliki
Papakonstantinou
John and Margie Parham
Glenn and Linda Parham
Carol Parker
John and Janat Parker
Parsec Financial
Management
Lewis Patrie
Frank Patton and
Susan Reiser
Jeff Paul
Graham and Amie Paul
Winston and Virginia Payne
Karl and Michelle Payton
Sarah Pedley and
Patricia Abrams
George Peery and
Mary Stair
Beverly and Clark Pennell
Carole and Jeff Pennell
PEO Sisterhood
International Chapter
CV-NC
Ray Perrin
Ann Perry
Larry and Trudi Peters
Glenn Peterson
Judith Peterson
John and Betty Petkovich
Pettigrew Living Trust
John Pfaff and David Dorn
Paul and Marilyn Phibbs
Rick and Beth Philipsen
Angela Pickett
Dr. and Mrs. John Piper
Karol and Lawrence
Pittman

Linda Price
Martha Price
Linda Prideaux
John and Liz Propst
Kathy Prosser
PRS (Precision
Restoration Services)
Publix Super Markets
Charities, Inc.
Anastasia Pukhalskaia
Quality Exteriors
Jesse Quam
Quartz Properties
Quility
Frank and Dixie Quinlan
Susan Quinzi
Melinda Raab
Robin Raines
Kit and Cal Rains
Ram Ramaswamy
Ramble Charitable
Fund of The CFWNC
Joyce Ramsey
Barbara Randall
Amira and Tom Ranney
Susan Ray
Anne and Paul Raybon
Lee and Kirk Raymond
Betty Jo Reading
Rebol Family Denistry
Betty Reed
Reems Creek-Beech
Presbyterian
Karen Reese
Lavonna Reeves and
Bruce Jahnke
Grace Rehnquist
Bill and Sandy Reid
Sarai and Willie Repoley

Dan Revala
Mary Reynolds
Larry Rhodes
Karen Rhymer
Grace and David Rice
Brad Rice
Daniel and Elizabeth
Riewald
Stephen and Liz Riley
Jennifer Rish
Philip Risorto and
Diana Soll
Shearon Roberts
Jeanette and Edward
Roberts
Cheryl and Dana Roberts
Roberts & Stevens P.A.
William Robertson
Alan and Cathy Robertson
Barry and Susan Robinson
Beth and Tom Robrecht
Bobbie Rockwell
Roger Smith, Attorney
at Law
John and Anne Rogers
Rogers/Slater Foundation
Julie Root
Victoria Rose
Evan and Susan
Rosenberg
Carol and Michael
Rosenblum
Michael Rossoff
Rotary Club of Asheville
Mary Rowe
Rowhouse Architects, Inc.
Michael Rowland
Martha Rowlett
Marc Rudow

Kevin and Donna Ruesch
John and Susie Ruhl
Rumbling River Consulting
Robby and Michelle Russell
Beth Russo and
Todd Weatherly
Dan Ruzic
Lee Ryan and
Nancy Aalberg
Bill Ryan and Lynn Bledsoe
Thomas Ryan
Clare Ryan
Bob Rymer and
Cathy Walsh
Donna Sable and
Garry Nelson
Carol Sahlfeld
Jacqueline Salabert
Cathy Samford
Sandra Samz
Ian Sanders
Ellen and Rick Sanders
Ellen Sandweiss
Daniel and Judith Sanford
Sanstone Management
Company
Bruce and Dee Santorini
Linda and Felix Sarubbi
John Schaller
Betsy and Ken Schapira
Nancy and Larry Schatz
Gerald and Margaret
Scheiner
Dr. Elizabeth Schenk
and Gary Schenk
Robin Schmidbauer
Heckathorn
Tory Schmitz



Ronald and Kim Leslie
Bobbie Lesman
Nels and Liz Leutwiler
Level 256 Classic
Arcade Bar
Rose Levering and
William Abbuehl
Richard and Bernice Levy
Susan and Paul Levy
Sharon Lewis and
Sandy Howard
Robert Lewis
Dana Lichty
Jane Light
Donna Limperes
Donald Lindsay
Arthur Lindsay and
Mary Catherine Crosby
Linnea and Steve Linton
Janis Lipscomb
William and Barbara Little
Terry and Fred Littleton
Virginia and Drew
Litzenberger
Mr. and Mrs. David M.
Lockett
Amy Loether
Lomax Family Foundation

Bill and Susan Macy
William and Janice Maddox
Tom and Nancy Maher
Ruth S. Maitland
Dorothy Maitland
Maria Maiz-Pena and
Luis Cabello
Ron Malanga and
Cornelia Bork
Nicholas and Amanda
Malgadey
Art Mandler and
Sandra Tambor
Chris and Rick Manheim
Angie and Mark Manuel
Randall Mardus
Mars Hill University
Bonner Community
Fund
Marge Marsh and
Earl Thompson
Jeanie Marshall
Twila Martin and
Richard Rhea
Shanon Martin
Mr. and Mrs. Pedro
Martinez
Sidney Mashburn

Carey McKain and
Linda Eriksen
Joseph McKee
Kathryn McKeithen
Virginia McKinley
Robert and Sandra
McKown
Kathryn and Mark McLane
Doug and Mary McLean
Gail McLeod
Paula McNabb
Jane and Kerney McNeil
Kathy McPeters
Bruce McQuillen
Lynne Meacham
John and Jil Meadows
Jan Meier
Eva and Ken Mellert
Mellow Mushroom
Daniel Mendl
George Mensch
Mary Merrill and David Tarr
Georgena Millar
Michael Miller
Artie and Esther Miller
Estate of Frances P. Miller
Michelle Miller
Steve and Debbie Miller
Stacey Millett

Lynne Neaves
Nesbitt Discovery
Academy
New Hope Presbyterian
Church
Marianne L Newman
John and Sandra Newman
Beverly Nivens
Virginia and James Nobles
Kathy Norris
Diana Norton
Bob Novy
Oakley United
Methodist Church
Diane Odiorne
Chrisann Ohler
Barbara Olsen
Brad and Laura Olson
Segun Olusanya
Timothy Ormond
Michael Osborne
Neil and Carol O'Sullivan
Wilbur and Deborah Otey
Michael and Harmony
Owen
Robert Pace
David Pace
Greg Padrick
Katherine Paige

Robert and Rebecca Pitts
Steve Plever and
Virginia Templeton
PNC Bank
PNC Foundation
Nancy Pollak
William Pomeroy
Hoyt and Laura Ponder
Michael Poulos and
Julie Lehman
Scott and Kathy Powell
James and Bitsy Powell
Ben and Jeanne Powell
John Powers
Keith and Jane Prairie
Presbyterian Foundation
Edward and Patty
Prestemon
Pat and Norma Price



Jayne Schnaars and Donald Gavin
 Dorothy and Mark Schneider
 William Schnell
 Ron and Ellen Schon
 Pam Schoon
 Julie and Warren Schultz
 Tiffany and Rob Schultz
 Nancy Schuman
 Gary and Lillah Schwartz
 Kristen Schweikert
 Kellie Scott
 Alice Sebrell
 Jennifer and Phil Sedlack
 Peter and Miriam Segall
 Self Help Credit Union
 David and Laurie Serfas
 Mimi Shackelford
 Richard Shaffer and Anastasia Bartlett
 Lee and David Shampang
 Robert Sharbaugh
 Scott Sharpe and Krista Shows
 Shay Brown Events
 Gail and Garry Sherman
 Rose Sherman and John Wilson
 Stephanie Shield
 Maggie Shoup
 Robert Sigmon
 Ricky and Traci Silver
 Silver-Line Plastics
 Dan Simpson
 Ralph Simpson
 Elizabeth Sims
 Mel and Sandra Sue Skiles
 Anet Skillin
 Rita Sklar
 SkySouth Aviation

Barbara Sloss
 Debra and Jeff Slossman
 Mary and Greg Smith
 Michelle Smith
 Francis and Claudia Smith
 Judy Smith
 Louise and Thom Smith
 Brian Smith
 Lee Smith
 Robert Smith and Susan Carson
 Richard and Glendine Smith
 Art and Nova Smoker
 Franklin Snipes
 Snow Hill United Methodist Church
 Russell and Janine Spiller
 Bonnie and Tom Spradling
 Pam Sroka
 St. Giles Chapel
 St. Paul's United Methodist Church
 Stefan Stackhouse
 Bil Stahl and Cathy Joyner
 Jack Stahlman
 Karen Stark
 Gail and Bob Stashick
 State Employees Combined Campaign
 John and Nancy Steffa
 Wayne Steinmetz
 Carol Stephenson
 Jerry Sternberg and Marlene Breger-Joyce
 Pete Steurer and Mary Alice Church-Steurer
 Daniel and Rebecca Steves
 Greg Still
 Alphus and Teresa Stines

Pam Stirewalt
 Laurel Stolte
 Rebecca and Pat Stone
 Dana and Jana Stonestreet
 John and Tina Stovall
 Jan and Wally Sturgis
 Aparna Sud
 William P Sullivan
 Jeffrey and Meredith Switzer
 Gregory Taffer
 Steven Taksa and Susan Connor
 Leslie Talbott
 Eric Tamila
 Stephen Tappis
 Jacklyn Tatelman and Nancy Pope
 Lyn Taylor
 Team Browne - Keller Williams
 Techo Real Estate Capital
 Tom and Kelley Temofonte
 Sharon and Al Tenty
 Terminix Service, Inc.
 The Biltmore Company
 The Estate of Richard G. Jennings, Jr.
 Jacob Tiessen
 Monica and Pete Thom
 Millie Thomas
 Shealy Thompson
 Barbara Thompson
 Bob and Mary Thompson
 Drew and Lisa Thomson
 Claire Tiernan
 Connie Tobolsky
 Rhoda Todd
 Martha and Jay Tolar
 Marty Toren
 Kate Townsend and Mike Hawkins
 Kathleen and Randy Treiber
 Debi and John Treleven
 Trinity Episcopal Church
 Arne Troelstra
 Zoe Trout and Jacob Biba
 Catherine Tuck Murphy
 Linda Tull
 Peter and Laura Turchi
 Caroline Twiggs
 Natalie Tyler
 Robert Tynes and Bette Bates
 Maggie Ullman
 Charles and Winslow Umberger
 United Way of Asheville and Buncombe County

Universal Joint
 Jennifer Van Dillen
 Eric and Susan Van Tassel
 Hall Van Vlack
 Randy and Pat Vanderbeek
 Vanderbilt Habitat for Humanity
 Jeff and Valerie Vanderlip
 Betsy Vandermeer
 Kirk Vandersall and Michelle Vruwink
 Ben VanSickle
 Marleen Varner
 Larry and Claire Versteegh
 Michelle Vessely
 Margaret and Jimmy Vestal
 Tracy Veteto
 Patrice Vincent
 John Voykin and Rachel Schmidt
 Carol and John Vruwink
 Christina and David Waldo
 Michael and Barbara Walker
 Emily Walker
 Betty Walker
 Laura and Dwyane Walker
 Sam and Joanne Walker
 Greg and Susanne Walker Wilson
 Stephanie and Adam Wallace
 Chris Walling
 Pat and Nancy Walters
 Gordon and Wendy Walton
 Heather Ward
 Brad Ward
 Robert and Kathy Ware
 Betsy Warren
 Warren Wilson
 Presbyterian Church
 Susan Washburn
 Anne Watrous
 Phebe and Doug Watson
 Sharon Waugh
 Howard Waxman
 Jack Webb
 Becky Webb
 Jan and Bryant Webster
 Harvey Wechsler
 Ann and Stuart Weidie
 Shannon Weiss
 Lynn Wells
 Wells Fargo Foundation
 Triad West
 Sabrina West
 Gary and Vicki West
 Robin Westphal
 Monte and Pat Westphal
 Whist

Andrew and Betsy White
 Robert and Sue White
 Julie and Jim White
 Callan and Allison White
 White Labs
 James Whitehouse
 Marcia Whiting
 Wicked Weed Brewing
 Greta Wicks
 Barbara Wilcox
 Priscilla Wilcox
 Gail and Bud Wiley
 William Wilkes
 Sharon and Michael Willen
 Dottie Williams
 Douglas and Patricia Williams
 Deborah Williams
 Ida Jane Williams
 Kay Williamson
 Roston and Patricia Williamson
 David Williamson
 Janie and Larry Wilson
 Eric and Sue Wilson
 Frances P Wingard
 Robert and Susan Winner
 Ellen Wolff
 Tom and Tommie Wolff
 Susan Wolin
 Ann Wood
 Theresa and Roger Wood
 Lisa Wood
 Catherine Woods
 Mary Bruce and Stephen Woody
 Toni and Rick Wooten
 Sarah Workman
 Diana Wortham
 Heather Wren
 Julian Wright
 Wes and Stephanie Wright
 Charles Wright
 Kailey Wyatt
 Ben Wyatt
 Joe and Shelli Yanik
 Brandon Yoho
 Sandra Yost
 Gayle and Joe Young
 Peggy Younger
 Edward and Harriet Zaidberg
 Zeta Phi Beta Sorority
 Nathaniel Zikha
 Sherrill and Ted Zoller
 Lisa Zorn



Memorial Gifts:

Edna "Pat" Anderson
 Dorothea Bodenheimer
 Mike Burke
 Carole Clark
 Vernon and E. Barbara Clayton
 Marie Clontz
 Bob Book
 Jane Cotton
 Christian Coyle
 Bill Crownover
 Joyce Davis
 Darlene Dietz
 Edward Duncan
 Barry Graves
 William Blake Hampson
 Roger Hartner
 Michael D. Holmes
 Brad Hunter
 Patricia Joslin
 Dr. Robert David Kaylor
 Charles Kennaugh
 William Kleiber
 Connie Koiner
 Jon Kraus
 Dorothy Maitland
 Mashburn

Steve Maxwell
 Adam Myers
 Jeannette Patrie
 Eileen Perrin
 Martha Peters
 Jerry Ratcliff
 Clifton Robinson
 Margaret Marie Sellers
 Sophia
 Arnold Sgan
 Jack Stevens
 Robert Teague
 Jim and Jeanne Webb
 Gun Wechsler
 Richard Werling
 Jack Edwin Williamson

Estate Gifts:

The Estate of Nada Barnett
 Estate of Timothy Dobbings
 The Estate of Richard G. Jennings, Jr.
 Estate of Frances P. Miller



OUR SPONSORS

MISSION INVESTORS

New Heights Neighborhood Sponsors (\$100,000+):

Buncombe County
Buncombe County COVID Recovery Funding
Dogwood Health Trust

Full House Sponsors (\$55,000- \$99,000):

Anonymous
Deerfield Community and Deerfield Charitable
Foundation V, VI, VII, VIII
W&S Foundation

Raise the Roof Sponsors (\$25,000 - \$54,999):

Bank of America
Kevin Click and April Liou
Rusty Pulliam Foundation

Foundation Sponsors (\$10,000 - \$24,999):

Anonymous
Lenore & Joe Baum
Duke Energy
Gower Corporation
Francee & Richard Healy
Randall & Mary Johnson
Quility
Wells Fargo

Adopt-a-Lot Sponsors (\$10,000):

Anonymous
AvL Technologies
Family of Susan Barbour
In Memory of Elbert S. Brown, Sr., from
the Brown Family
Fay Brown
Spencer & Carol Duin
Jane Fant
Giving Tuesday Donors
Jeffrey & Dianna Goodman
Rhoda & Bill Groce
In honor of three wonderful women-Mary Gurland,
Bethany Williams, and Mandy McCulloch
Eva & Ken Mellert
Sierra Nevada
Roberts and Stevens

Reaching New Heights Fund (\$10,000+):

Kevin Click and April Liou
Cassie Dillon

Blueprint Sponsors (\$1,000-\$9,999):

Beattie Foundation
The Caterpillar Foundation
Christensen & Clifford Team at Premier Sotheby's
Int'l Realty
Dry Ridge Family Medicine
The Fool's Build
GE Aviation
Mast General Store
Mosaic Community Lifestyle Realty
Moses Brown School
Quartz Properties
Rebol Family Dentistry
State Farm
Swinging Stilettos
TAProots
Wild Bodema Women Drummers
The Wombats

Thank you to our Blueprint Breakfast for Dinner Sponsors!

Sustainable Community, \$10,000+

AAHH Board Challenge
Wells Fargo

Multi-Generational, \$5,000

Anonymous (2)
Kevin Click and April Liou
Cassie Dillon
Gower Corporation
Shay Brown Events
Terminix Service, Inc.

Innovative Community, \$1,000

Altamus, LLC (Wes Reinhardt)
Blue Ridge Orthodontics
Builders FirstSource
Cassie Dillon
Tricia and Charlie Franck
First Citizens Bank
Ian Fischer
Larry and Barbara Griswold
Hedrick Industries
Home Trust Bank
JAG Construction
Know Network Risk
Level 256 Classic Arcade Bar
Brad and Laura Olson
Parsec Financial
PNC Bank
Precision Restoration Services
Self-Help Credit Union
SkySouth Aviation
Team Browne - Keller Williams
Universal Joint
John and Carol Vruwink

Livable Community, \$500

Advanced Business Equipment
Atlantic Bay Mortgage Group
BCBSNC in Honor of WNC Health Insurance
Champion Credit Union
Engel and Volkers Asheville
Sidney Mashburn



**Home Repair Sponsors:
\$50,000+**

Buncombe County

The City of Asheville through HUD's Community Development Block Grant Program

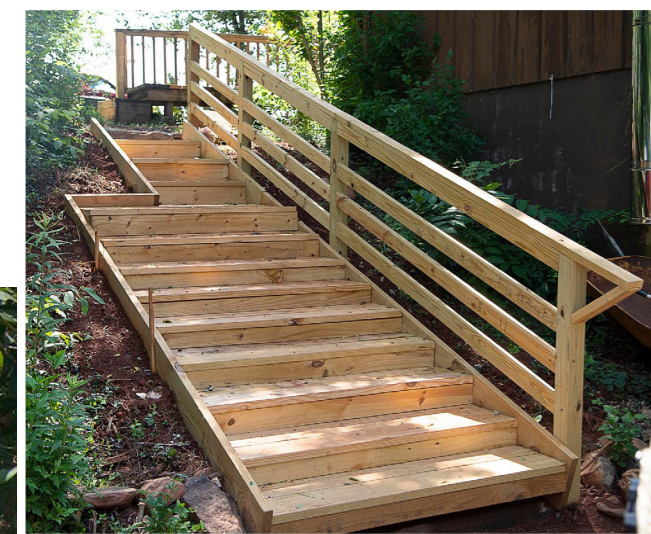
Dogwood Health Trust

**Home Repair Sponsors:
\$25,000-\$49,999**

Anonymous

Elevation Church

Wells Fargo



**Home Repair Sponsors:
\$10,000-\$24,999**

Black Mountain Swannanoa Valley Endowment Fund of The CFWNC

Gower Corporation

The Home Depot Foundation

Human Services Grant of The CFWNC

Steve and Barbara Lehrer

Ramble Charitable Fund of The CFWNC

**Home Repair Sponsors:
\$5,000-\$9,999**

Black Mountain Swannanoa Valley Endowment Fund of The CFWNC

Pamela Culp and Pam McGill

Eaton Charitable Fund

Ginger's Revenge

Debbie and Steve Miller

PNC Bank



ReStore Business Partners

Business Partners donate at least \$3,000 of merchandise within a 12 month period.

#1 Junk Genie

The Biltmore Company

Buchanan Construction

Deerfield Episcopal Retirement Community

Ferguson Bath, Kitchen & Lighting Gallery

Givens Estates

Givens Highland Farms

HomeSource Design Center

Jenny to the Rescue

Morgan-Keefe Builders

Mountain Paint & Decorating



Gayle has lived in her home in Alexander for 44 years built on land passed down to her from her parents. Rotted wood- from decades of weather- left her porches and walkways wobbly and very unsafe. Gayle admits that she had even fallen and injured herself. Our Home Repair team worked to make her home safer and more accessible by repairing and rebuilding steps, decks, and a ramp.

Current Staff

- Maddy Alewine
- Olivia Allen
- Jaks Ashley
- Jessica Auer
- Andy Barnett
- Danielle Belletete
- Scott Bianchi
- Amanda Bilbrey
- Kevin Blue
- Jeff Bridgman
- Colin Bristow
- Jenny Bromley
- Tim Bromley
- Carrie Burgin
- Kenny Busch
- Beth Coakley
- Jason Cockman
- Bob Dalman
- Dougy Desrosiers
- Alice Donnelly*
- Sebastian Doty
- Jesse Edgerton
- Sara Egan
- Sumaya El-Attar
- Martin Ford
- Sheila Garcia-Garmon
- Grant Garmon
- Jennie Goldenberg
- Jessica Gustines
- Jarrold Jarvis
- Joel Johnson
- Shannon Kauffman
- Ariane Kjellquist
- Kim Klass
- Will Lewis
- Jacob Lopez
- Elizabeth Lusk

- Paul Mazzola
- John McDermott
- Pete McKelvey
- John Meadows
- Eva Mellert*
- Danny Mendl
- Jared Moehring
- Cassidy Moore
- Morgan Nuss
- Billy Oakes
- Piper Parker
- Jeff Paul
- John Powers
- Kit Rains
- Paul Reeves
- Scott Sharpe
- Nathan Shaw
- Maggie Shoupe
- Michelle Smith
- Rick Soule
- Cherish Stephens-Vickers*
- Eric Tamila
- Jacob Thiessen
- Zoe Trout
- Ben VanSickle
- Laura Walker
- Brian Wallace
- Stephanie Wallace
- Charles Wright
- Ben Wyatt
- Brandon Yoho

Current AmeriCorps members

- Matthew Grant
- Jessie Israel

*part-time



Serving Buncombe & Madison Counties

Non-profit Organization

U.S. Postage

PAID

Asheville, NC

Permit No. 371

33 Meadow Rd. Asheville, NC 28803
828.251.5702 // ashevillehabitat.org

BOARD OF DIRECTORS

Brad Olson, President

Mychal Bacoate, Vice President

Joe Ward, Treasurer

Melissa Banks, Secretary

Kevin Click

Michael Dempsey

David English

Tricia Franck

Spencer Hardaway

Leslie Hennessee

Sidney Mashburn

Stacey Parkins Millett

Steve Miller

Karl Payton

Larry Peek

Jessica Phelan

Brad Rice

Elizabeth Sims

Wes Wright